

Xerox DocuShare Server Solutions

Xerox DocuShare products are supported by two server offerings that both extend and enhance the breadth of DocuShare solutions. Organizations may leverage these servers to deliver industry-specific applications and customized configurations that meet vertical and line-of-business needs.

Xerox DocuShare Archive Server

The DocuShare Archive Server allows users to easily move older documents and email messages stored in DocuShare into a secure archive, preserving DocuShare access controls, locations, fully searchable indexes, and other metadata. This enables safe, cost-effective storage of expired content, yet still ensures rapid search and retrieval using the Advanced Search function within the familiar DocuShare interface. Users simply include the Archive Server in the search request to access archived content.

Moving less-active content to the Archive Server maximizes performance of the primary DocuShare server by keeping it optimized and efficient, and knowledge workers can quickly restore archived data to the primary DocuShare server with a single click.

The benefits of deploying the Archive Server are two-fold. Enterprises can harness the information spread

throughout an organization to achieve greater efficiency and a competitive advantage. They can also improve project management and decision-making processes by enabling users to:

- Archive out-of-date content on a separate DocuShare server and protect it from unauthorized login
- Manually archive content as needed or flag it for automatic archival based on preset expiration dates
- Easily perform archived document searches from within the familiar DocuShare search interface
- Restore archived content to the primary DocuShare server instantly and easily, with all access permissions maintained

Xerox DocuShare Incremental Server

The DocuShare Incremental Server is ideal for workgroups, departments, and organizations that:

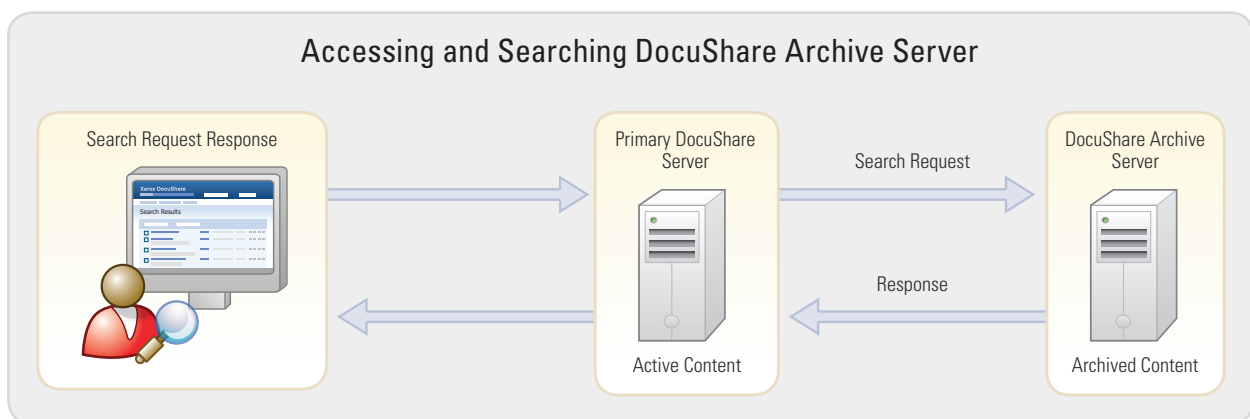
1. Wish to configure a high-availability backup server
2. Face infrastructure challenges and wish to keep local content on a local server to protect against bandwidth issues
3. Wish to establish a federation of DocuShare servers
4. Require content to be kept on separate servers for security purposes

1. Configuring a high-availability solution

As part of a high-availability solution, the DocuShare Incremental Server may be configured as a backup server. All content in DocuShare may be backed up on a regular schedule to the Incremental Server, which then serves as the DocuShare production server should the primary DocuShare server be disrupted.

2. Addressing bandwidth issues

The DocuShare Incremental Server can also help organizations address infrastructure challenges by enabling individual



Knowledge workers may use the advanced search interface of the primary DocuShare server to include Archive Server in all searches. Resulting entries can be restored to the primary DocuShare server with a single click.

branches or divisions to store local content on a local server, while enterprise content remains accessible on a centralized, global server. In this scenario, content on both servers may be shared by the entire organization as needed using a DocuShare and DocuShare CPX federation of servers.

3. Establishing a DocuShare and DocuShare CPX federation of servers

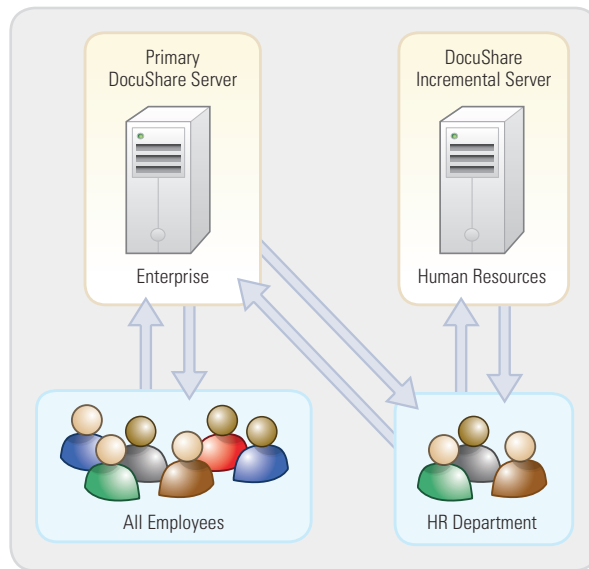
The DocuShare Incremental Server enables organizations to build a federation of DocuShare and DocuShare CPX servers, leveraging global use with federated access permissions and document management tools. User licenses for the Incremental Server will be issued based on the number of seats purchased for the primary DocuShare server. Once the federation is established, users can pick and choose which servers to search. Search results will be grouped by server, therefore access controls will vary from server to server.

4. Segregating sensitive content

Some enterprises may select to segregate DocuShare's capabilities within specific

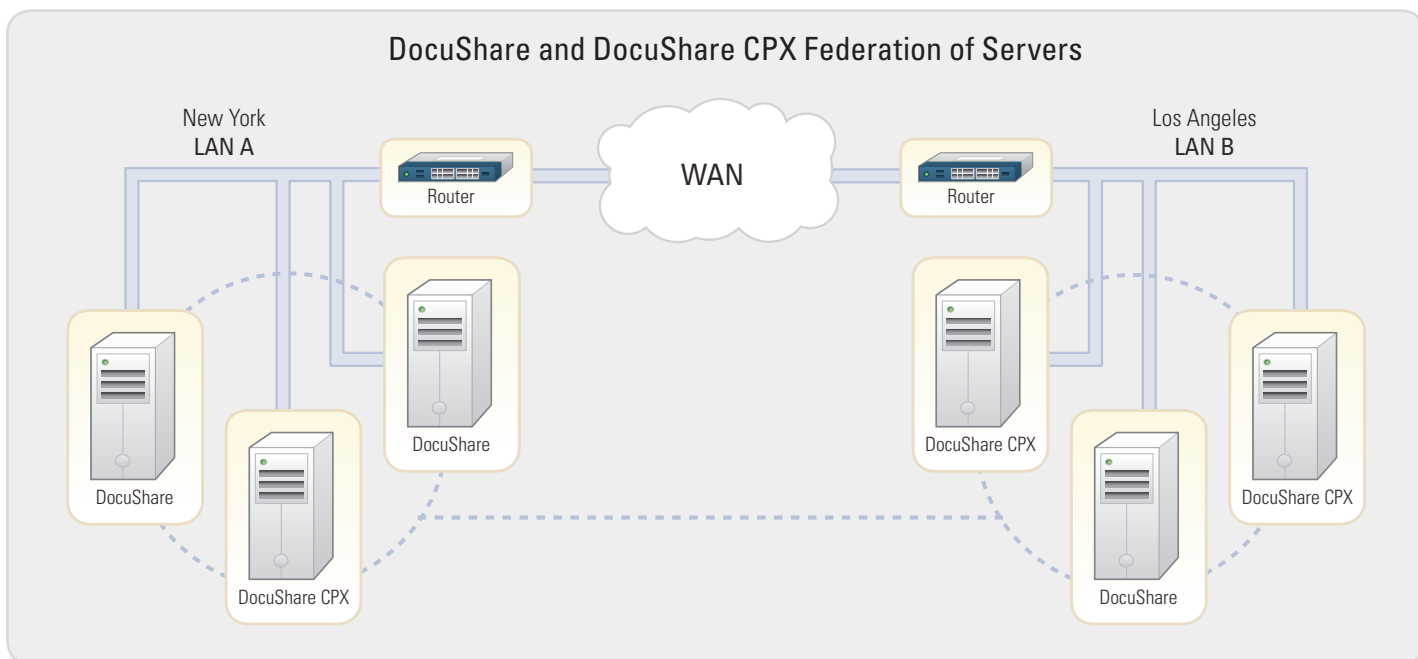
applications. For example, a Healthcare organization may wish to maintain all patient records, lab results, reports, and account information on a segregated server as part of its compliance with HIPAA policies. Or, as shown in the diagram, the Human Resources department of a global enterprise may require a unique server to support email or fax server submission of employment applications, and for the subsequent storage of employee records and personnel files.

Once Incremental Server licenses are purchased, licenses may be used for any of the scenarios described, as well as a development server or a test server for quality assurance purposes. This is a very low cost option to insure the functionality,



Sensitive content can be segregated on the DocuShare Incremental Server for controlled access by specific workgroups or departments, while content on the primary DocuShare server remains available to all authorized users in the enterprise.

stability, and quality assurance of upgrades, updates, and new application development prior to deployment on the actual production server.



Creating a DocuShare and DocuShare CPX federation of servers enables organizations to deploy a wide-variety of disparate or segregated content management configurations, while centralizing search functionality. All federated servers can be searched from one request and results include entries for each server.

Xerox

DocuShare®

For more information, call **1.800.735.7749** or visit **docushare.xerox.com**